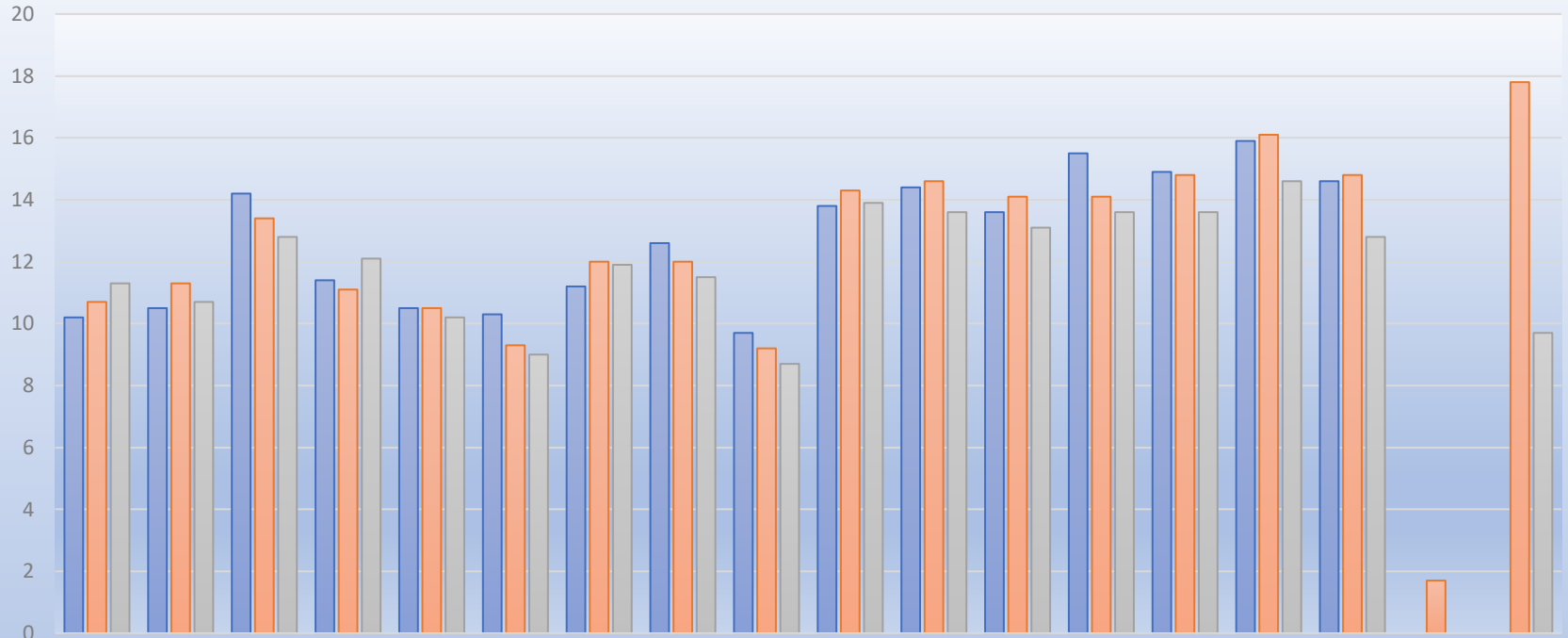


Full-Time Equivalent Students to Full-Time Equivalent Instructional Personnel

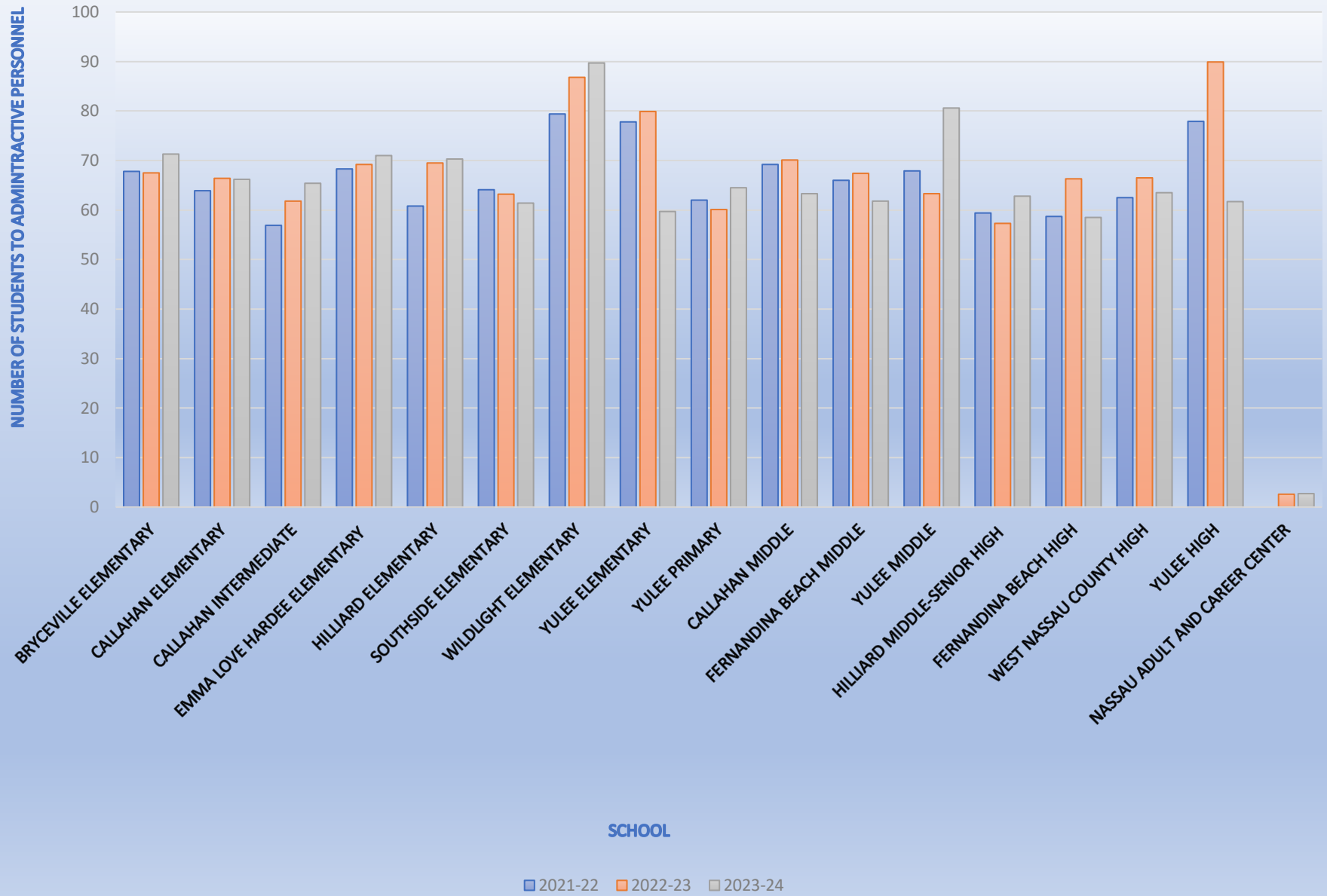
NUMBER OF STUDENTS TO ONE INSTRUCTIONAL PERSONNEL



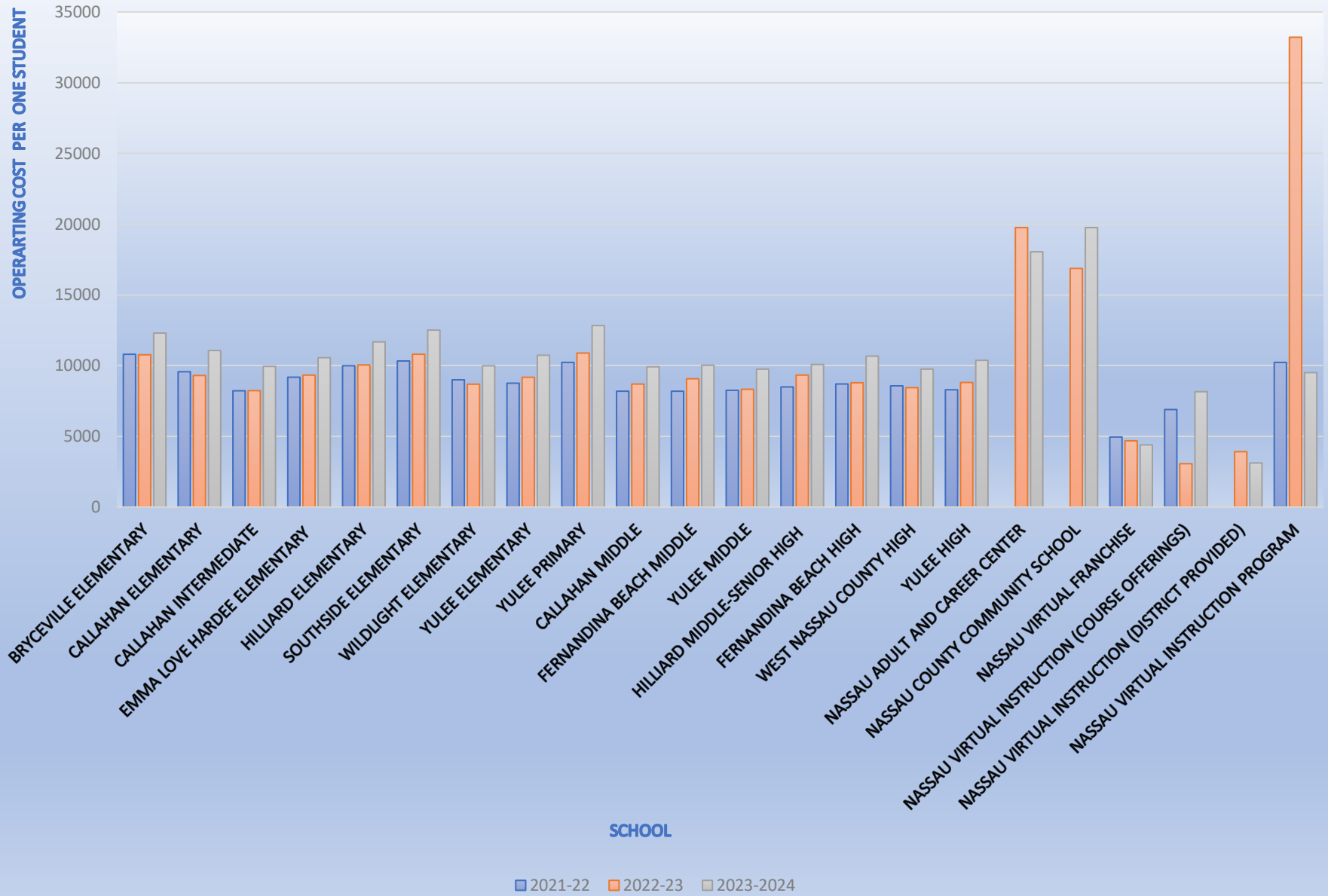
SCHOOL

2021-22 2022-23 2023-24

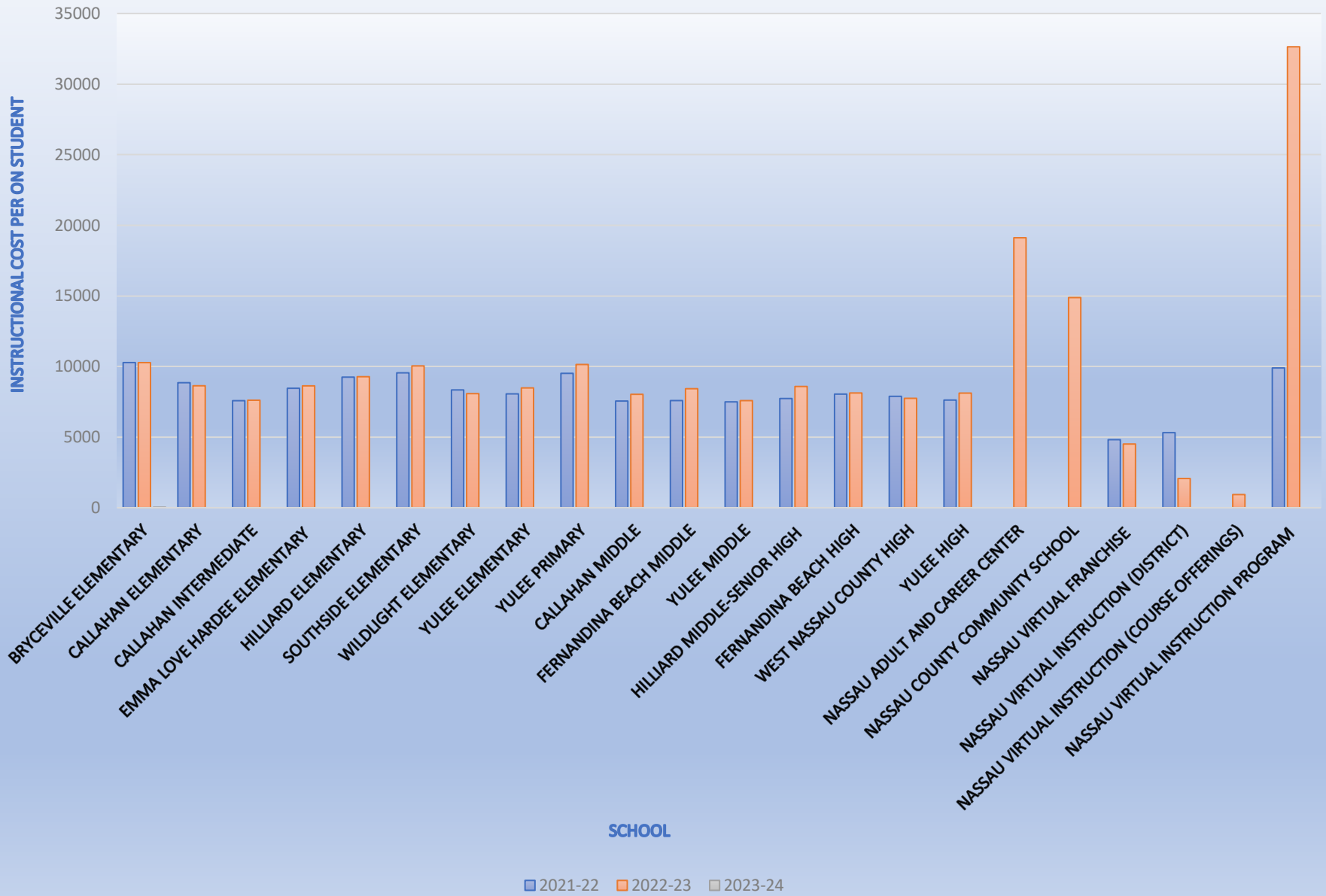
Full-Time Equivalent Students to Full-Time Equivalent Administrative Personnel



Operating Expenditures to Full-Time Equivalent Student



Instructional Expenditures Per Full-time Equivalent Student



General Administrative Expenditures as a Percentage of Total Budget

